

*The Future
of
Shaped
Electromagnetic
NDT
Technology*

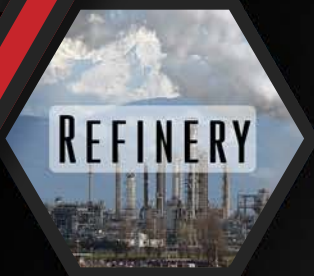
ECHO-3D



PIPELINE



RAIL



REFINERY



ASSET
MANAGEMENT



3-D
VISUALIZATION



CORROSION



SCC



ANALYSIS



DETECTION
+
MAPPING

ATHENA INDUSTRIAL SERVICES

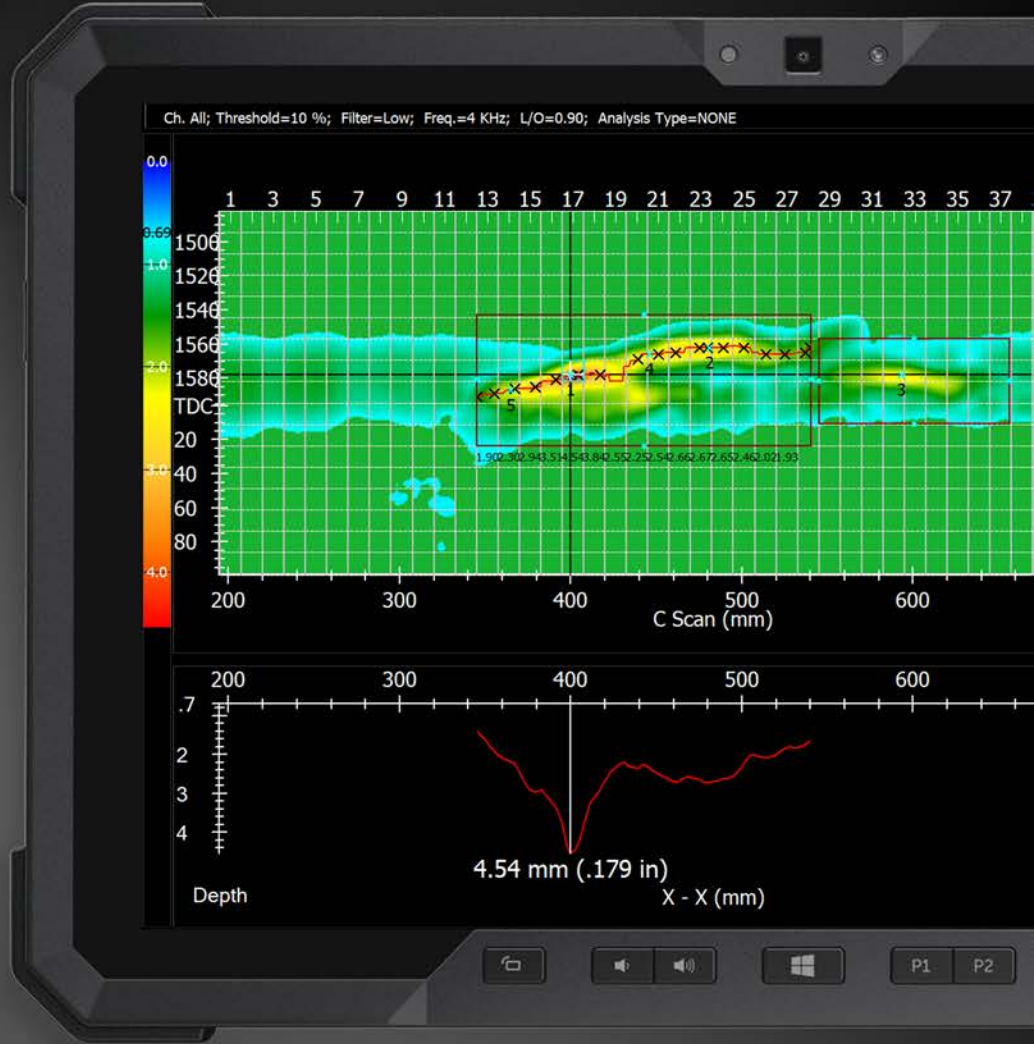


ECHO-3D is a shaped electromagnetic NDT Technology that detects, maps, and measures surface breaking defects in ferrous and non-ferrous materials.

On-Site real time analysis capabilities map and measure the severity of SCC and cracking up to 6mm ±0.5mm.

Echo-3D carries a suite of analysis tools ready to interpret the raw data giving operators clear actionable results on location.

Data recorded is instantly available for full use with multiple tools from 3D modeling to full reporting



NDT Technology Comparison

	ECHO-3D	EC	ECA	MPI	DP	UT	PAUT
Detection Through Coating	Green	Red	Red	Red	Red	Red	Red
Non-contact	Green	Red	Red	Red	Red	Red	Red
Minimal Surface Preparation	Green	Red	Red	Red	Red	Red	Red
Axial & Circumferential Cracking	Green	Yellow	Yellow	Yellow	Yellow	Yellow	Yellow
Accurate Depth Sizing	Green	Yellow	Yellow	Red	Red	Yellow	Yellow
Real-Time 3D Visualization	Green	Red	Red	Red	Red	Red	Yellow
Automated River Bottom	Green	Red	Red	Red	Red	Red	Red
Data Recording	Green	Yellow	Green	Red	Red	Green	Green
High Inspection Speed	Green	Red	Green	Red	Red	Yellow	Yellow
Ferrous & Non Ferrous	Green	Green	Green	Red	Green	Green	Green